



● READ ● INTERPRET ● THINK ● RESEARCH ● WRITE ● REVIEW ● MARK ● RECORD



LEVEL 2

CARD 7

RIGHT WORDS SET A

TM

COPYRIGHT THE OUTER EDGE LIMITED 1993
SPECIAL CONDITIONS APPLY

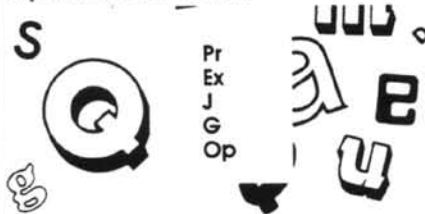


DO NOT WRITE ON OR MARK THIS CARD IN ANY WAY

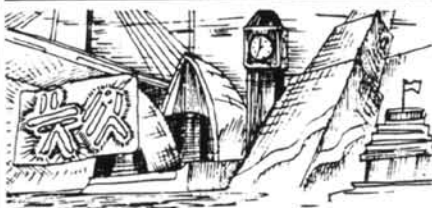
ALPHABET SKILLS



Put the letters and letter combinations into correct alphabetical order.



USING AN ATLAS



Which city in each set is nearer to the Tropic of Capricorn?

- [1] Wellington/Christchurch
- [2] Gaborone/Lusaka
- [3] Sydney/Wellington
- [4] Hobart/Auckland
- [5] Rosario/Buenos Aires



REMEMBER: (1) Words in **bold italics** appear as entry words in the glossary of your Student Record Book (S.R.B.) (2) A solid star symbol (★) signifies a "Right Word Clue" (R.W.C.)—see page two of your S.R.B. for details (3) If in doubt about what to do, see pages two and three of your S.R.B., as a first step in dealing with your problem.

CODEBREAKING



Proof-read for spelling by identifying and correcting the five misspelt words in this set.

ghost, favorite, ansered, forty, choosing, prettier, lovey, ninty, wonderful, especially, citizen

WORDWISE



Name the missing gender to complete each pair.

- [1] _____/nun
- [2] _____/niece
- [3] lad/_____
- [4] lord/_____
- [5] male/_____



Write the word which does not belong in each set. (Be prepared to explain your choices)

- [6] father, aunt, ladies, sister
- [7] employment, salary, job, crane
- [8] composer, fold, plan, cut
- [9] throw, shorts, kick, vault
- [10] stereo, speakers, music, stories



EARLY FINISHERS AND THOSE HUNGRY FOR MORE "BRAINFOOD" - TRY ONE (OR BOTH) OF THESE -



BRAIN-BENDER'S PURSUIT

Use the clues provided to complete this word circuit then use the glossary information in your S.R.B. to prepare one of your own. (5pts for a correct solution/5pts for your contribution).



L	O	S	E	R
E				A
A				I
S				S
T	H	R	E	E

Draw a 4 letter word circuit in your S.R.B., then use the clue to complete the circuit.

- part of face
- close to something
- in a hurry
- every; everyone



RESEARCHER'S PURSUIT

Select a topic which interests you and read about it. From your reading, produce a "fact card" containing what you consider to be the ten most important facts about the topic you have chosen. Consider: the amazing world of plants and/or animals, the human body, inventions that have changed our lives, people and/or events that have changed our lives ... etc.

