



LEVEL 2

CARD 10

RIGHT WORDS SET A

TM

COPYRIGHT THE OUTER EDGE LIMITED 1993
SPECIAL CONDITIONS APPLY

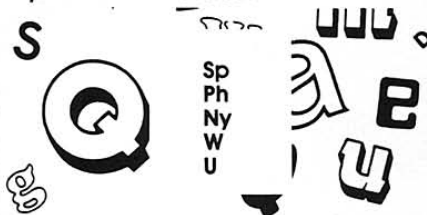


DO NOT WRITE ON OR MARK THIS CARD IN ANY WAY

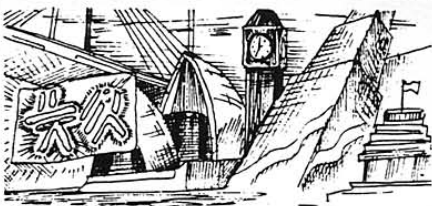
ALPHABET SKILLS



Put the letters and letter combinations into correct alphabetical order.



USING AN ATLAS



Which city in each set is nearer to the *Tropic of Capricorn*?

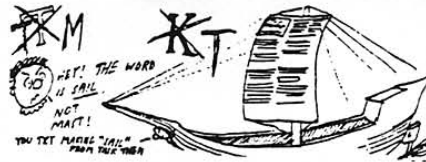
- [1] Arica/La Paz
- [2] Walvis Bay/Maputo
- [3] Port Elizabeth/Durban
- [4] Harare/Lusaka
- [5] La Paz/Lima



• READ • INTERPRET • THINK • RESEARCH • WRITE • REVIEW • MARK • RECORD

REMEMBER: (1) Words in *bold italics* appear as entry words in the glossary of your Student Record Book (S.R.B.) (2) A solid star symbol (*) signifies a "Right Word Clue" (R.W.C.)—see page two of your S.R.B. for details (3) If in doubt about what to do, see pages two and three of your S.R.B. as a first step in dealing with your problem.

CODEBREAKING



Proof-read for spelling by identifying and correcting the five misspelt words in this set.

dresses, fight, could'nt, frightening, colored, cloth, churchs, truly, tomorrow, already, carrying, centre

WORDWISE



Name the missing **gender** to complete each pair.

- [1] heir/_____
- [2] _____/she
- [3] gentleman/_____
- [4] _____/widow
- [5] hero/_____



Write the word which **does not belong** in each set. (Be prepared to explain your choices)

- [6] ship, tug, ferry, signal
- [7] congregation, pulpit, worship, criminal
- [8] double decker, station, lines, platform
- [9] fuselage, undercarriage, pilot, lifeboat
- [10] baking, bite, swallow, chew



EARLY FINISHERS AND THOSE HUNGRY FOR MORE "BRAINFOOD" - TRY ONE (OR BOTH) OF THESE -



BRAIN-BENDER'S PURSUIT

Use the clues provided to complete this **word circuit** then use the glossary information in your S.R.B. to prepare one of your own. (5pts for a correct solution/5pts for your contribution).



L	O	S	E	R
E				A
A				I
S				S
T	H	R	E	E

Draw a 4 letter word circuit in your S.R.B., then use the clues to complete the circuit.

- wet weather
- a story
- a short letter
- a type of boat



I WAS GOING TO DO THE MEANING OF LIFE - BUT YOU NEED A BEARD.

RESEARCHER'S PURSUIT

Select a topic which interests you and read about it. From your reading, produce a "fact card" containing what you consider to be the ten most important facts about the topic you have chosen. Consider: the amazing world of plants and/or animals, the human body, inventions that have changed our lives, people and/or events that have changed our lives ... etc.

