

LEVEL 2

CARD 6

### RIGHT WORDS SET A

TM

COPYRIGHT THE OUTER EDGE LIMITED 1993  
SPECIAL CONDITIONS APPLY

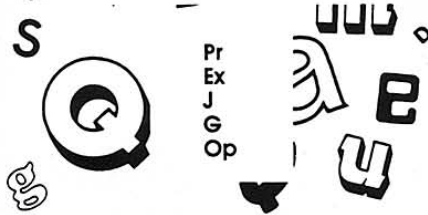


DO NOT WRITE ON OR MARK THIS CARD IN ANY WAY

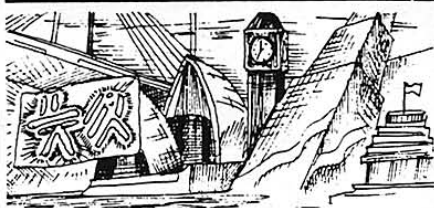
### ALPHABET SKILLS



Put the letters and letter combinations into correct alphabetical order.



### USING AN ATLAS



Which city in each set is nearer to the *Tropic of Capricorn*?

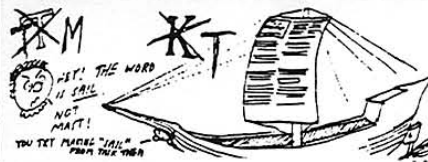
- [1] Wellington/Christchurch
- [2] Gaborone/Lusaka
- [3] Sydney/Wellington
- [4] Hobart/Auckland
- [5] Rosario/Buenos Aires



● READ ● INTERPRET ● THINK ● RESEARCH ● WRITE ● REVIEW ● MARK ● RECORD

REMEMBER: (1) Words in *bold italics* appear as entry words in the glossary of your Student Record Book (S.R.B.) (2) A solid star symbol (★) signifies a "Right Word Clue" (R.W.C.)—see page two of your S.R.B. for details (3) If in doubt about what to do, see pages two and three of your S.R.B. as a first step in dealing with your problem.

### CODEBREAKING



**Proof-read** for spelling by identifying and correcting the five misspelt words in this set.

ghost, favorite, ansered, fourty, choosing, prettier, lovelly, ninty, wonderful, especially, citizen

### WORDWISE



Name the missing **gender** to complete each pair.

- [1] \_\_\_\_\_/nun
- [2] \_\_\_\_\_/niece
- [3] lad/\_\_\_\_\_
- [4] lord/\_\_\_\_\_
- [5] male/\_\_\_\_\_



Write the word which does not belong in each set. (Be prepared to explain your choices)

- [6] father, aunt, ladies, sister
- [7] employment, salary, job, crane
- [8] composer, fold, plan, cut
- [9] throw, shorts, kick, vault
- [10] stereo, speakers, music, stories



EARLY FINISHERS AND THOSE HUNGRY FOR MORE "BRAINFOOD" - TRY ONE (OR BOTH) OF THESE -



### BRAIN-BENDER'S PURSUIT

Use the clues provided to complete this **word circuit** then use the glossary information in your S.R.B. to prepare one of your own. (5pts for a correct solution/5pts for your contribution).



L	O	S	E	R
E				A
A				I
S				S
T	H	R	E	E

Draw a 4 letter word circuit in your S.R.B., then use the clue to complete the circuit.

- part of face
- close to something
- in a hurry
- every; everyone



I WAS GOING TO DO THE MEANING OF LIFE - BUT YOU NEED A BEARD.

### RESEARCHER'S PURSUIT

Select a topic which interests you and read about it. From your reading, produce a "fact card" containing what you consider to be the ten most important facts about the topic you have chosen. Consider: the amazing world of plants and/or animals, the human body, inventions that have changed our lives, people and/or events that have changed our lives ... etc.

